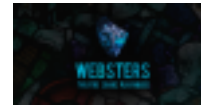


# Technical Information Pack



## Webster's Playhouse - Glasgow

### Standard Staffing Provision

As standard our playhouse hires do not include any technician or use of technical equipment, As it is a dry space hire however a technician can be arranged for your booking if required - **this will incur a charge of £20/hour/technician with a minimum 4-hour call**. Any additional staffing should be discussed with the Technical Manager at least 21 days prior to your event to allow sufficient time to arrange staffing.

### Technical Pre Rig

If additional setup is required outside the time of your booking a pre rig can be arranged (Providing the playhouse is clear before your event to do so). We ask that all setup requirements be discussed with the theatre in as much detail as possible and at your earliest convenience.

**A minimum 4 hour call for the setup of the space will incur charges at £20 per hour..**

### Get-In/Get-Out:

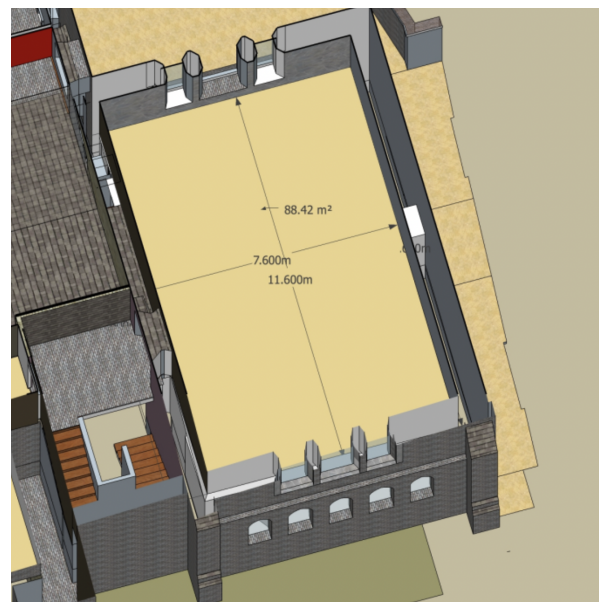
The Get-In/Get-Out door for the Playhouse is the main door on Great Western Road. There are several steps from street level to the door.

The get-out should be scheduled to begin as soon as possible after the final performance, unless otherwise arranged with the Technical Managers. Similar to any set up done prior to the booking, any equipment to be left in the venue for collection at a later date, must be agreed with the Technical Manager prior to the event and will incur a holding charge of £50.

**PLEASE NOTE: Get outs cannot begin until all members of the public have cleared the Playhouse.**

### Space Layout, Capacity & Dimensions

The Playhouse is a 11.8m x 7.6m space with a high arched ceiling. The space can be set out in a number of ways in past performances the most common set up is the playing space located at the back of the room, however another popular configuration is to set the room horizontally against the curtained wall (as seen in pictures on our website).



# Technical Information Pack



## Webster's Playhouse - Glasgow

**Capacity** of the space is a **strict 60 persons**. Due to the single exit we must ensure that no more than 60 people are in the space at any one time, **this includes all staff, cast and crew required**.

### Emergency Exit

The Playhouse has a sole entrance and exit that must remain clear at all times, in addition to this a 1.2m path must be clear to this exit to ensure a safe evacuation. Any questions or queries about emergency exits can be directed to our Technical Manager. At the beginning of your hire we ask that you familiarise yourself with the exit and the procedure. In the event of an evacuation Playhouse attendees will be directed down the stairs and out of our main door on Great Western Road, they will then make their way to North Woodside Road at the side of the building across the street until the fire brigade approve reentry.

### Parking

Webster's Theatre does not have any parking spaces available at the theatre. Great Western Road at Kelvin Bridge has limited **PAID** parking spaces available outwith peak periods.

### Power

Located around the room at each corner and pillar (as seen on website) there are double 13 amp sockets

### Lighting Equipment

Although not provided as standard we can provide additional lighting for your event, we have an Alpha Pack available which can accommodate 3 channels of generic light - we have a collection of fresnel, profile and par cans which can be used (Usually set up on a T-Bar at the back of the room) We also have a collection of gels and frames to choose from. Lighting charges are listed on the hire form. **Please Note: The use of haze is strictly prohibited.**

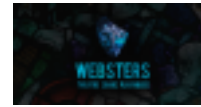
### Sound Equipment

A sound system can be put in place for your event if required this includes:

- An Active HK PA System (2x Top, 2x Subwoofer)
- 2x Active HK Foldback Monitors
- A small selection of dynamic microphones

Sound equipment charges are listed on the hire form.

# Technical Information Pack



Webster's Playhouse - Glasgow

## **Additional Equipment Hires**

If you are interested in additional equipment not kept in-house, get in touch with our technical staff as we have a good working relationship with the local hire companies and can in most circumstances arrange the hire/quotes for you, and simply add it to your closing invoice plus a 10% handling charge..

## **Venue Contacts**

**Dex Reid**

**Technical Manager**

**Email:**

dextechnical@webstersglasgow.com

**Tel:** 07494 561804

**Matt Ronald**

**Booking Manager**

**Email:** matt@webstersglasgow.com

**Tel:** 07913 986214